

**Battioni®**  
**Pagani**

*Setting the pace since 1953*

**Technical Catalogue**  
Catalogo Tecnico  
Technischer Katalog

# **2020**

# **PRIMARY**

# **SECONDARY**

# **VALVE**



[www.bapag.it](http://www.bapag.it)

rev. 2 del 15/10/2020

# OVERFLOW VALVE MOD. BPC - BPD - BPE

VALVOLA DI TROPPO PIENO/SOUPAPE DE TROP-PLEIN/ÜBERLAUFVENTIL



Battioni®  
Pagani

*Setting the pace since 1953*

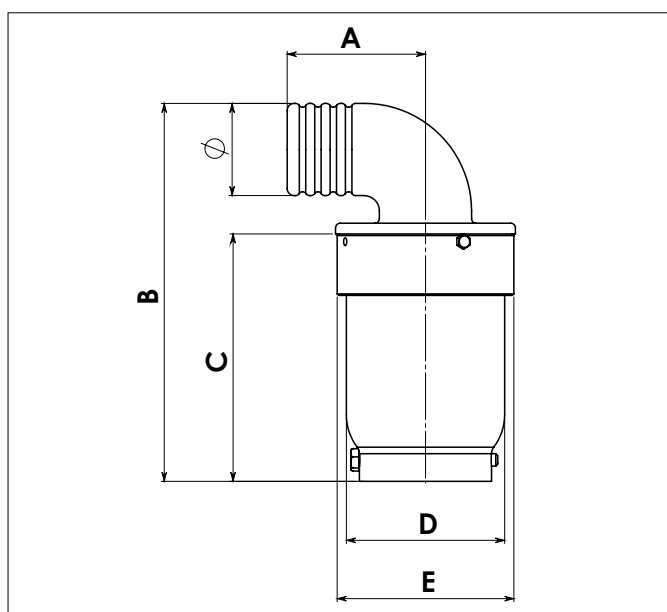


## FEATURES

- WORKING CONDITIONS: PRESSURE = 1.5 bar (22 psi)  
TEMPERATURE = -15°C / +80°C
- IRON RING TO BE WELDED BUILT
- AIRFLOW RANGE 1000-8000 l/min

## CARATTERISTICHE

- CONDIZIONI DI ESERCIZIO: PRESSIONE = 1.5 bar (22 psi)  
TEMPERATURA = -15°C / +80°C
- GHIERA IN FERRO DA SALDARE INCORPORATA
- PORTATA ARIA 1000-8000 l/min



Code	Model	Ø	l/min	A	B	C	D	E	Kg	Article
6100200006	BPC	45	1000-3000	90	240	161	105	117	4.5	202/B
6100200007	BPD	60	3000-5000	90	246	161	105	117	4.7	202/C
6100200008	BPE	80	5000-8000	125	315	197	162	170	9.6	202/D



# CHECK MOISTURE TRAP MOD. BPA - BPB - BPF

VALVOLA DI SICUREZZA DI TROPPO PIENO/  
SOUPAPE DE SECURITÉ DE TROP-PLEIN/ÜBERLAUFSICHERHEITSVENTIL

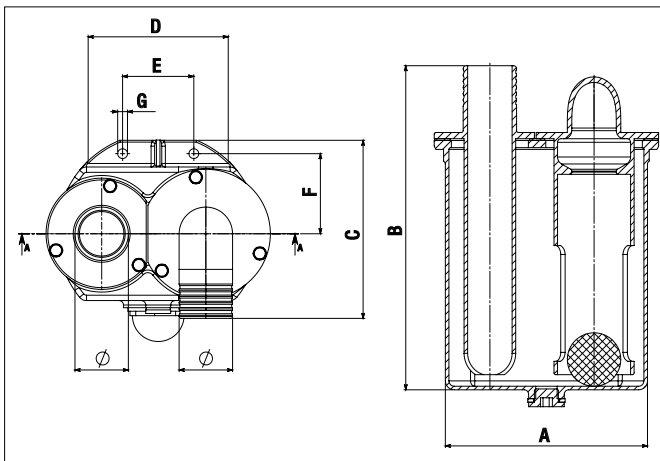


## FEATURES

- WORKING CONDITIONS: PRESSURE = 1.5 bar (22 psi)  
TEMPERATURE = -15°C / +80°C
- CONTROL SIGHT GLASS IN CASE OF FLUID INPUT
- DISCHARGE VALVE ON REQUEST
- VACUUM PRESSURE GAUGE ON REQUEST
- AIRFLOW RANGE 1000-8000 l/min

## CARATTERISTICHE

- CONDIZIONI DI ESERCIZIO: PRESSIONE = 1.5 bar (22 psi)  
TEMPERATURA = -15°C / +80°C
- SPIA DI CONTROLLO IN CASO DI INGRESSO LIQUIDO
- RUBINETTO DI SCARICO A RICHIESTA
- MANOVUOTOMETRO A RICHIESTA
- PORTATA ARIA 1000-8000 l/min



Code	Model	Ø	l/min	A	B	C	D	F	F	G	Kg	Article
610020003	BPA	45	1000-3000	227	365	230	175	80	90	11	17.5	201/B
610020004	BPB	60	3000-5000	227	365	230	175	80	90	11	18.5	201/C
610020005	BPF	80	5000-8000	227	365	230	175	80	90	11	20.5	201/D
504020006	EXHAUST VALVE Ø 3/4" GAS / RUBINETTO DI SCARICO Ø 3/4" GAS										0.3	318
510170007	VACUUM PRESSURE GAUGE Ø 80 - 3/8" GAS / MANOVUOTOMETRO Ø 80 CON ATTACCO DA 3/8" GAS										0.3	901/DA

# OVERFLOW VALVE MOD. BPT - BPU

VALVOLA DI TROPPO PIENO/SOUPAPE DE TROP-PLEIN /  
 ÜBERLAUFSICHERHEITSVENTIL

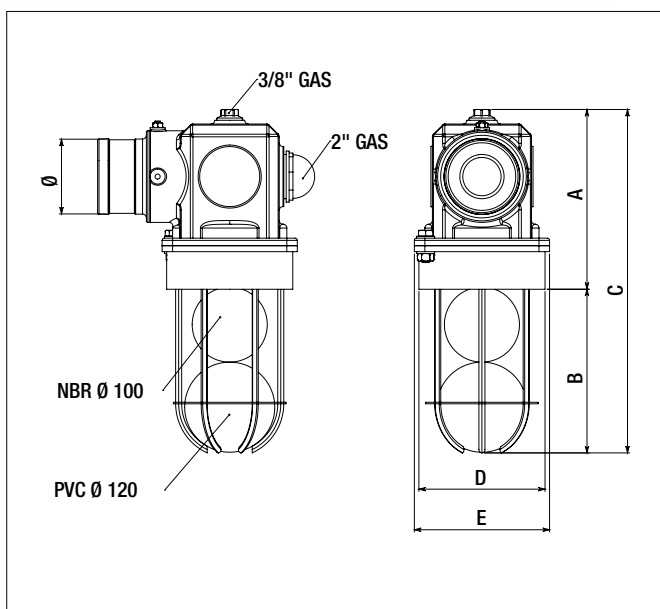


## FEATURES

- WORKING CONDITIONS: PRESSURE = 1.5 bar (22 psi)  
 TEMPERATURE = -15°C / +80°C
- IRON RING TO BE WELDED BUILT
- VACUUM PRESSURE GAUGE ON REQUEST
- AIRFLOW RANGE: 5000-18000 l/min
- DOUBLE BALL FOAM TO REDUCE THE TRANSITION

## CARATTERISTICHE

- CONDIZIONI DI ESERCIZIO: PRESSIONE = 1.5 bar (22 psi)  
 TEMPERATURA = -15°C / +80°C
- GHIERA IN FERRO DA SALDARE INCORPORATA
- MANOVUOTOMETRO A RICHIESTA
- PORTATA DA 5000-18000 l/min
- DOPPIA SFERA PER LIMITARE IL PASSAGGIO SCHIUMA



Code	Model	Ø	l/min	A	B	C	D	E	Kg	Article
6100200025	BPT	80	5000-11000	240	220	460	168	180	13.9	217/D
6100200026	BPU	100	11000-18000	240	220	460	168	180	14	217/E
5101700002	VACUUM PRESSURE GAUGE Ø 80 - 3/8" GAS / MANOVUOTOMETRO Ø 80 CON ATTACCO DA 3/8" GAS								0.3	901/D



# CHECK MOISTURE TRAP MOD. BPR – BPS

VALVOLA DI SICUREZZA DI TROPPO PIENO/  
SOUPAPE DE SECURITÉ DE TROP-PLEIN/ÜBERLAUFSICHERHEITSVENTIL



### FEATURES

- WORKING CONDITIONS: PRESSURE = 1.5 bar (22 psi)  
TEMPERATURE = -15°C / +80°C
- GALVANIZED STEEL BODY
- CONTROL SIGHT GLASS IN CASE OF FLUID INPUT
- DISCHARGE VALVE ON REQUEST
- VACUUM PRESSURE GAUGE ON REQUEST
- REVOLVING ELBOW
- TWO BALL FOR FOAM STOPPING

### CARATTERISTICHE

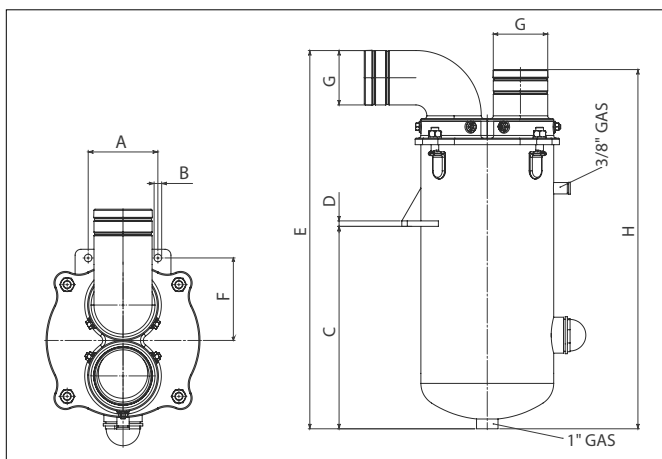
- CONDIZIONI DI ESERCIZIO: PRESSIONE = 1.5 bar (22 psi)  
TEMPERATURA = -15°C / +80°C
- CORPO IN ACCIAIO ZINCATO A CALDO
- SPIA DI CONTROLLO IN CASO DI INGRESSO LIQUIDO
- RUBINETTO DI SCARICO A RICHIESTA
- MANOVUOTOMETRO A RICHIESTA
- CURVA ORIENTABILE
- DOPPIA SFERA PER LIMITARE IL PASSAGGIO DI SCHIUMA



5101470007



5040200014



Code	Model	A	B	C	D	E	F	G	l/min	H	Kg	Article
6100200021	BPR	120	13	372	10	695	205	Ø 80	5000-11000	660	35.6	213/D
6100200022	BPS	120	13	372	10	685	205	Ø 100	11000-14000	660	36	213/E
5040200014	EXHAUST VALVE Ø 1" GAS / RUBINETTO DI SCARICO Ø 1" GAS										0.4	320
5101700007	VACUUM PRESSURE GAUGE Ø 80 - 3/8" GAS / MANOVUOTOMETRO Ø 80 CON ATTACCO DA 3/8" GAS										0.3	901/DA

# OVERFLOW VALVE MOD. BPT - BPU INOX

VALVOLA DI TROPPO PIENO INOX/SOUPAPE DE TROP-PLEIN INOX  
/ÜBERLAUFSICHERHEITSVENTIL INOX

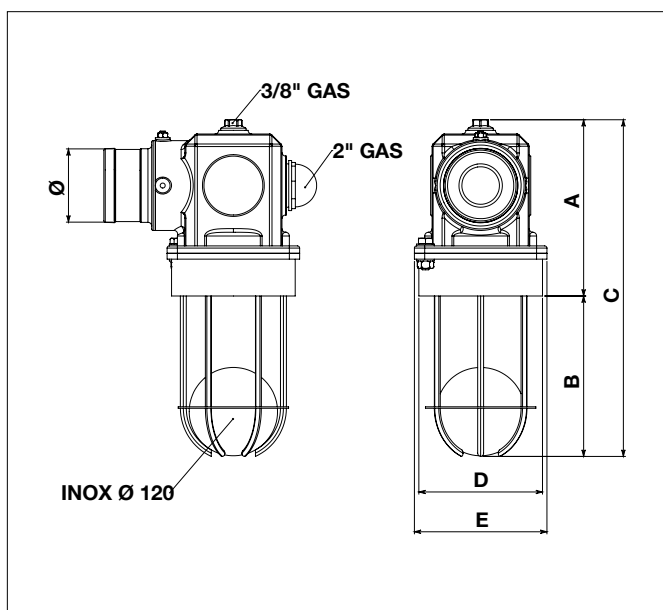


## FEATURES

- WORKING CONDITIONS: PRESSURE = 1.5 bar (22 psi)  
TEMPERATURE = -15°C / +80°C
- IRON RING TO BE WELDED BUILT
- VACUUM PRESSURE GAUGE ON REQUEST
- AISI 316 BALL IN STAINLESS STEEL
- AIRFLOW RANGE: 5000-18000 l/min
- VERSION WITH STEEL SEAL RUBBER

## CARATTERISTICHE

- CONDIZIONI DI ESERCIZIO: PRESSIONE = 1.5 bar (22 psi)  
TEMPERATURA = -15°C / +80°C
- GHIERA IN FERRO DA SALDARE INCORPORATA
- MANOVUOTOMETRO A RICHIESTA
- SFERA DI TENUTA IN ACCIAIO INOX AISI 316
- PORTATA DA 5000-18000 l/min
- VERSIONE INOX CON TENUTA IN GOMMA



Code	Model	Ø	l/min	A	B	C	D	E	Kg	Article
6100200027	BPT INOX	80	5000-11000	240	220	460	168	180	13.8	217/F
6100200028	BPU INOX	100	11000-18000	240	220	460	168	180	13.9	217/G
5101700002	VACUUM PRESSURE GAUGE ø 80 - 3/8" GAS / MANOVUOTOMETRO ø 80 CON ATTACCO DA 3/8" GAS								0.3	901/D





### FEATURES

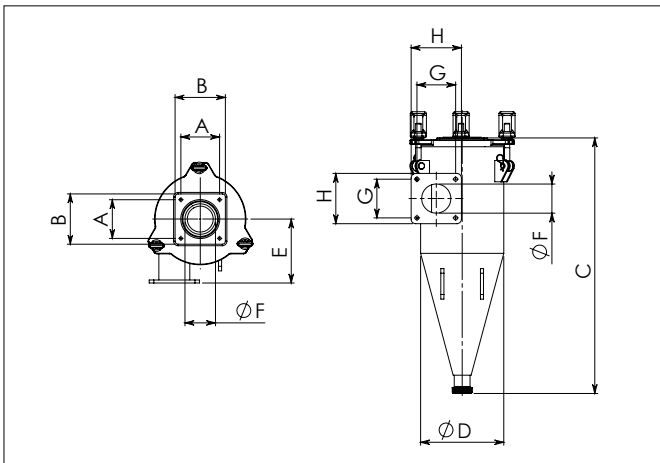
- WORKING CONDITIONS: PRESSURE = 1.5 bar (22 psi)  
TEMPERATURE = -15°C / +80°C
- AISI 304 STAINLESS STEEL BODY OR GALVANIZED STEEL BODY
- AISI 316 Ø 120 STAINLESS STEEL BALL
- CONTROL SIGHT GLASS
- OVEPRESSURE VALVE ON REQUEST
- MAX AIRFLOW 18000 l/min

### CARATTERISTICHE

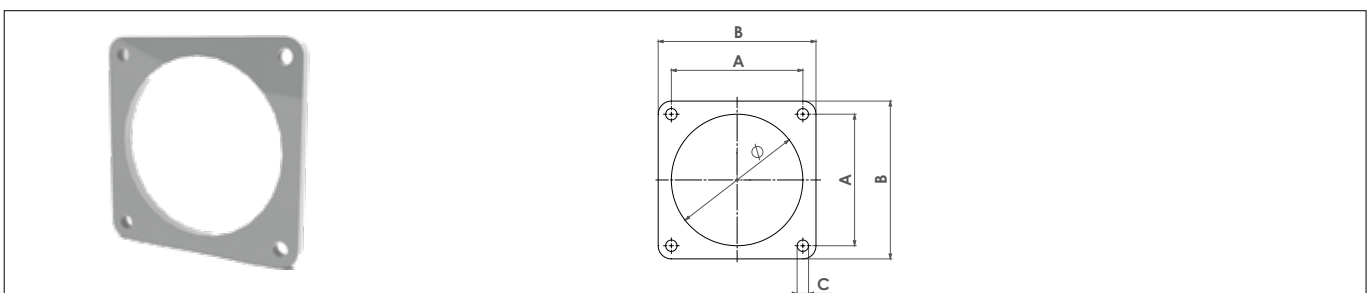
- CONDIZIONI DI ESERCIZIO: PRESSIONE = 1.5 bar (22 psi)  
TEMPERATURA = -15°C / +80°C
- CORPO IN ACCIAIO INOX AISI 304 OPPURE IN ACCIAIO ZINCATO
- SFERA IN ACCIAIO INOX AISI 316 Ø 120
- SPIA DI CONTROLLO
- VALVOLA DI SOVRAPRESSIONE A RICHIESTA
- PORTATA MAX 18000 l/min



5040200016



Code	Model	Material	A	B	C	D	E	F	G	H	Kg	Article
6100200034	KTS	INOX AISI 304	135	165	840	273	210	100	150	180	35	2302/L
6100200033	KTS	GALVANIZED	135	165	840	273	210	100	150	180	35	2302/M
5040200016	EXHAUST VALVE Ø 1" 1/4 GAS / RUBINETTO DI SCARICO Ø 1" 1/4 GAS										0,5	322



Code	DN	Ø	A	B	C	N. Holes	Thickness	Kg	Article
4010407015	4"	100	135	165	13	4	10	2,5	2006/E

# PRIMARY SHUT-OFF VALVE Ø 120 / Ø 150

VALVOLA PRIMARIA/SOUPAPE PRIMARIE/PRIMÄRSVENTIL

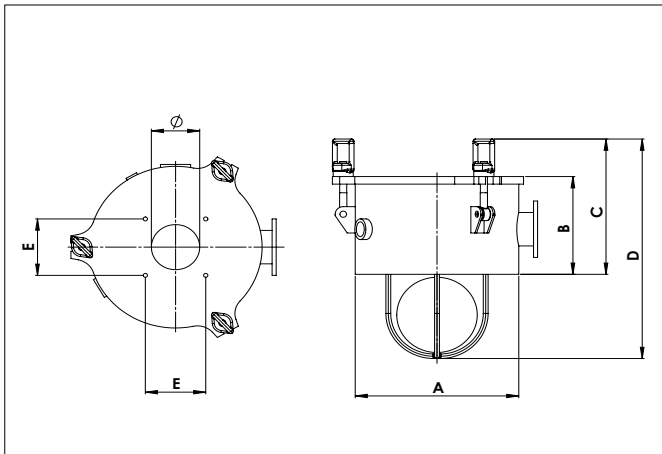


### FEATURES

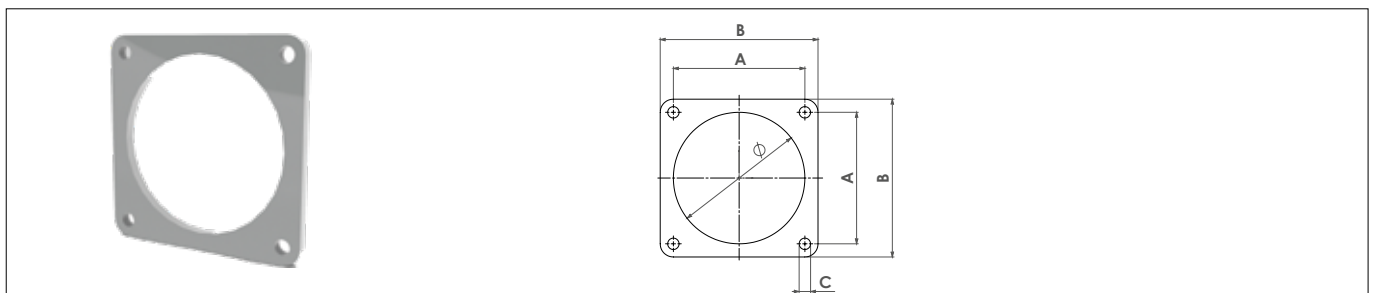
- WORKING CONDITIONS: PRESSURE = 1.5 bar (22 psi)  
TEMPERATURE = -15°C / +80°C
- IRON RING TO BE WELDED BUILT
- AISI 304 STAINLESS STEEL BODY OR STEEL BODY
- Ø 200 STAINLESS STEEL BALL
- MAX AIRFLOW 55000 l/min

### CARATTERISTICHE

- CONDIZIONI DI ESERCIZIO: PRESSIONE = 1.5 bar (22 psi)  
TEMPERATURA = -15°C / +80°C
- GHIERA DA SILDARE INCORPORATA
- CORPO IN ACCIAIO INOX AISI 304 OPPURE IN ACCIAIO
- SFERA IN ACCIAIO INOX Ø 200
- PORTATA MAX 55000 l/min



Code	Model		Ø	A	B	C	D	E	Kg
6100200038	KTS/KTM/BLW	STEEL	120	406	260	360	585	150	46.5
6100200042	KTS/KTM/BLW/WSM	STEEL	150	406	260	360	585	150	46
6100200046	KTS/KTM/BLW	INOX AISI304	120	406	260	360	585	150	46.5
6100200047	KTS/KTM/BLW/WSM	INOX AISI304	150	406	260	360	585	150	46



Code	DN	Ø	A	B	C	N. Holes	Thickness	Kg	Article
5010406003	6"	150	150	180	13	4	10	0,8	316/G





# CYCLON SHUT-OFF VALVE 1600 / 2300 / 3300

VALVOLA SECONDARIA/SOUPAPE SECONDAIRE/SECUNDÄRSVENTIL

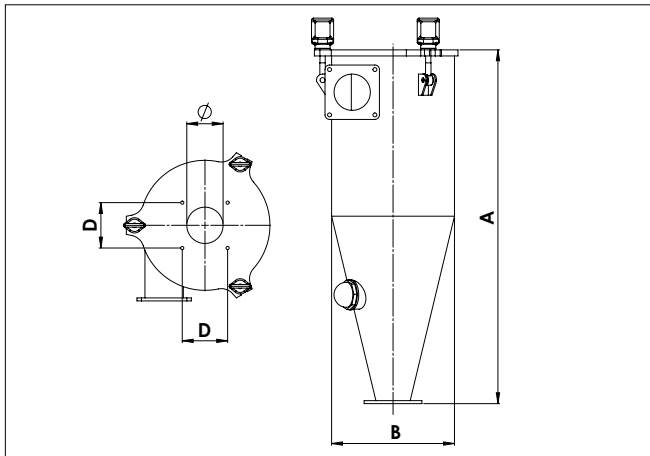


### FEATURES

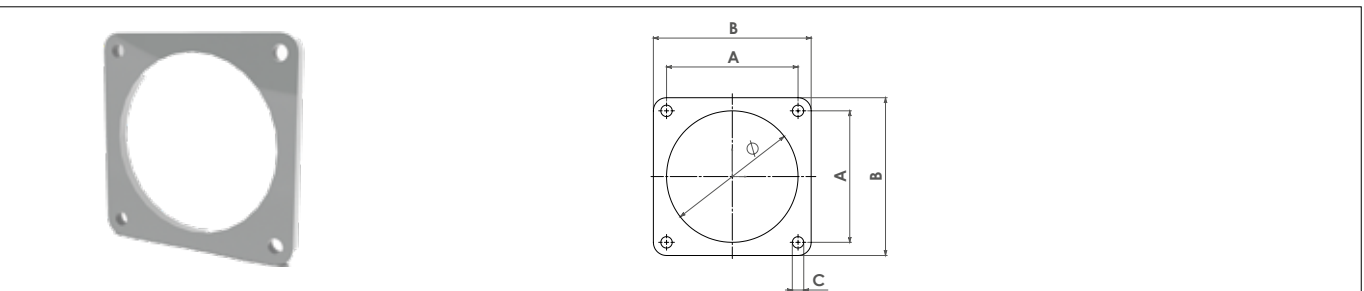
- WORKING CONDITIONS: PRESSURE = 1.5 bar (22 psi)  
TEMPERATURE = -15°C / +80°C
- AISI 304 STAINLESS STEEL BODY OR GALVANIZED STEEL BODY
- Ø 200 STAINLESS STEEL BALL
- OVERPRESSURE VALVE AS STANDARD
- CONTROL SIGHT GLASS
- MAX AIRFLOW 55000 l/min

### CARATTERISTICHE

- CONDIZIONI DI ESERCIZIO: PRESSIONE = 1.5 bar (22 psi)  
TEMPERATURA = -15°C / +80°C
- CORPO IN ACCIAIO INOX AISI 304 OPPURE IN ACCIAIO ZINCATO
- SFERA IN ACCIAIO INOX Ø 200
- VALVOLA DI SOVRAPPRESSIONE DI SERIE
- SPIA DI CONTROLLO
- PORTATA MAX 55000 l/min



Code	Valve	Model	Ø	A	B	D	Kg
6100200039	1600 GALVANIZED	KTS/KTM/BLW	120	1170	406	150	81.5
6100200040	2300 GALVANIZED	KTS/KTM/WSM/BLW	150	1170	406	150	81
6100200041	3300 GALVANIZED	KTS/KTM/WSM/BLW	150	1030	500	150	105
6100200043	1600 INOX	KTS/KTM/BLW	120	1170	406	150	81.5
6100200044	2300 INOX	KTS/KTM/WSM/BLW	150	1170	406	150	81
6100200045	3300 INOX	KTS/KTM/WSM/BLW	150	1030	500	150	105



Code	DN	Ø	A	B	C	N. Holes	Thickness	Kg	Article
5010406003	6"	150	150	180	13	4	10	0,8	316/G



Battioni®

Pagani

*Setting the pace since 1953*

**Battioni Pagani reserve the right to modify without notice the data features shown in this manual.  
The reproduction, even partial of this manual is forbidden by law.**

Battioni Pagani si riserva il diritto di approntare modifiche ai dati e alle caratteristiche illustrate nel manuale.  
La riproduzione, anche parziale, del presente manuale è vietata ai termini di legge.



**Battioni®  
Pagani**

*Setting the pace since 1953*



**Battioni Pagani Pompe S.p.A.**  
Via Ferrari N. 2  
43058 Sorbolo Mezzani (PR) - Italy  
Ph. +39 0521 663203

[www.bapag.it](http://www.bapag.it)  
[info@bapag.it](mailto:info@bapag.it)

