

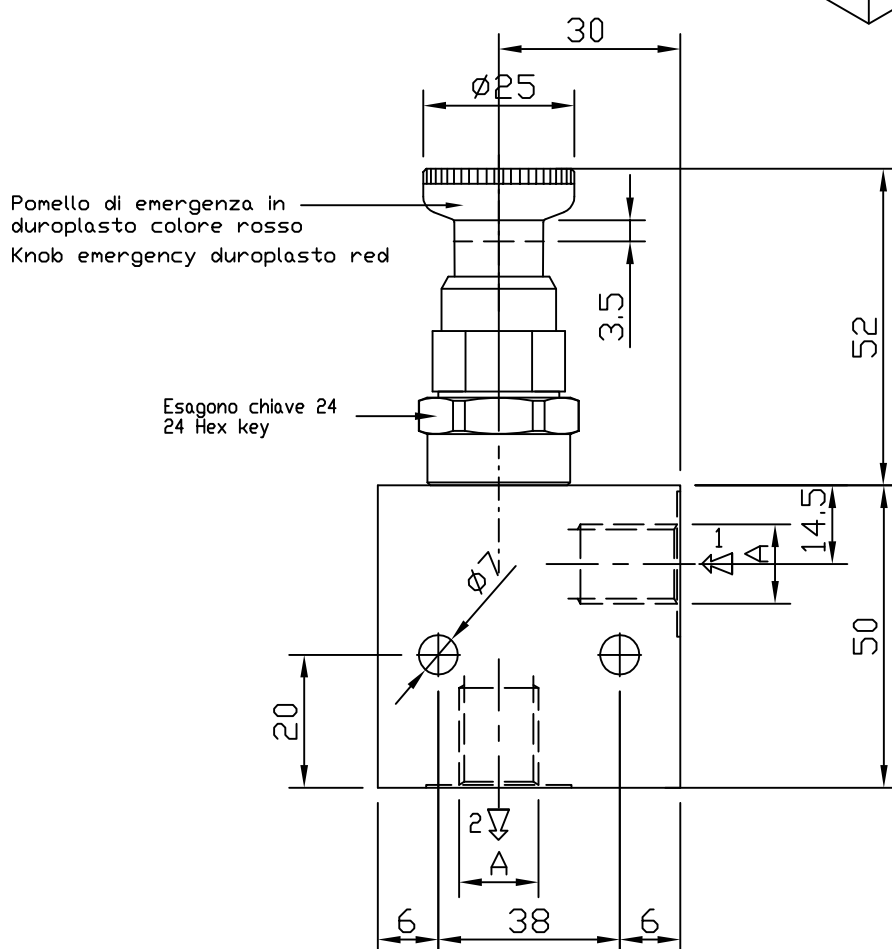
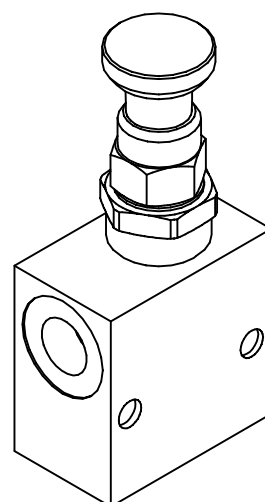
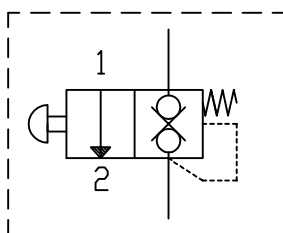
VALVOLE DI EMERGENZA MANUALI (CHIUSE)

VEB6-NC

MANUAL EMERGENCY VALVES (CLOSE)

Le valvole di emergenza manuali vengono utilizzate per aprire il passaggio di olio in un circuito idraulico attraverso un comando manuale (flusso bloccato in entrambe le direzioni).

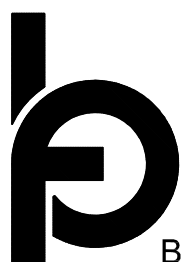
The manual emergency valves open the passage of oil in a hydraulic circuit by a manual command (blocked flow in both directions).



CODICE DI ORDINAZIONE

ORDERING CODE

VEB6-NC



BIEFFE OLEODINAMICA

Portata max Max flow l/min	Pressione max Max pressure bar	A
25	250	BSPP 1/4
1 → 2		